

LAND CERTIFICATE NO. 46001 COPY

Land Certificate No. 46001 Tulcea

A. Part I. Property description LAND

within the built-up area

Address: Loc. Tulcea, Str POTCOVARI, Tronson 1, Jud. Tulcea

Item no.	Cadastral number Topographic number	Surface* (sqm)	Observations / References
A1	46001	541	Unfenced land; Land delimited by a metal fence and the conventional boundary.

B. Part II. Owners and documents

Entries regarding property rights and other real rights		References
85924 / 28/08/2020		
Normative Act no. 143, dated 30/07/2020 issued by the Tulcea Local Council; Normative Act no. 133, dated 30/10/2008 issued by the TULCEA LOCAL COUNCIL; Administrative Act no. 11262, dated 20/08/2020 issued by the TULCEA LOCAL COUNCIL; Normative Act no. 1360, from 27/12/2001 issued by the GOVERNMENT OF ROMANIA;		
B1	Tabulation, PROPERTY right, acquired by law, current share 1/1, initial share 1/1	A1
	1) TULCEA MUNICIPALITY, CIF (Fiscal Identification Code): 4321429, public domain	

C. Part III. ENCUMBRANCES.

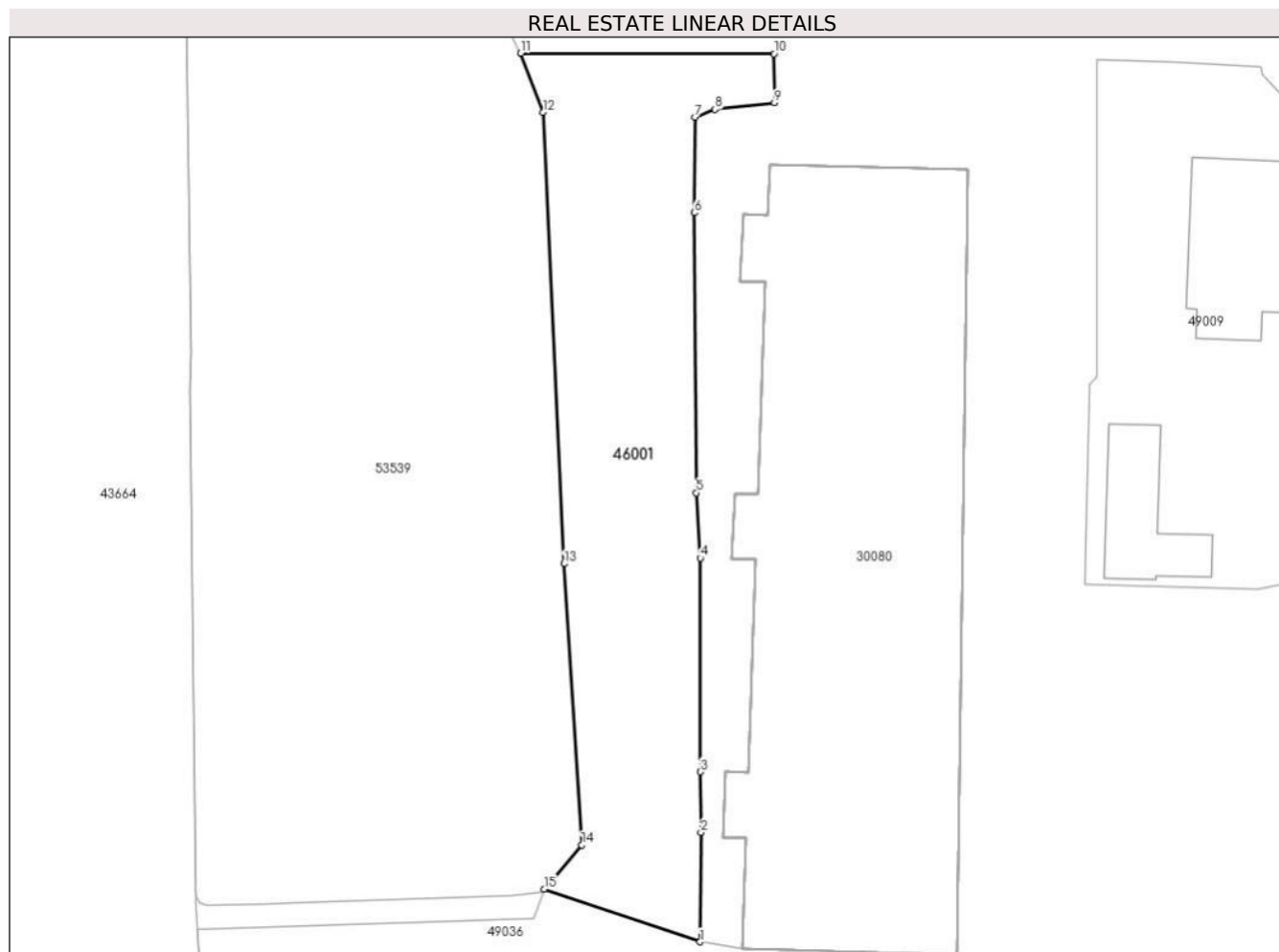
Entries regarding dismemberment of property rights, real rights of guarantee and encumbrances	References
NOT EXISTING	

Annex No. 1 To Part I

Land

Cadastral no.	Surface (sqm)*	Observations / References
46001	541	Land delimited by a metal fence and the conventional boundary.

* The surface is determined in the Stereo 70 projection plane.



Land related data

Item no.	Usage category	Land within the built-up area	Surface (sqm)	Strip land	Lot	Topographical no.	Observations / References
1	road	YES	541	-	-	-	

Segments length

1) The segment length values are obtained from the plan projection.

Start point	End point	Segment length (** (m))
1	2	7,243
2	3	3,994
3	4	14,133
4	5	4,321
5	6	18,516
6	7	6,313

Start point	End point	Segment length (** (m)
7	8	1,439
8	9	3,953
9	10	3,223
10	11	16,744
11	12	4.18
12	13	29,871
13	14	18,621
14	15	3,834
15	1	10,873

** Segment lengths are determined in the Stereo 70 projection plane and are rounded to 1 millimeter.

*** The distance between the points is made up of cumulative segments that are smaller than the value of 1 millimeter.